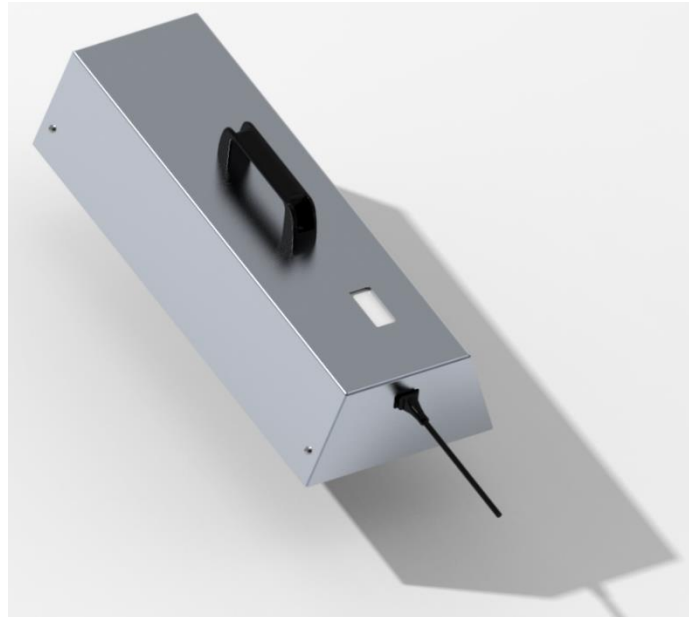
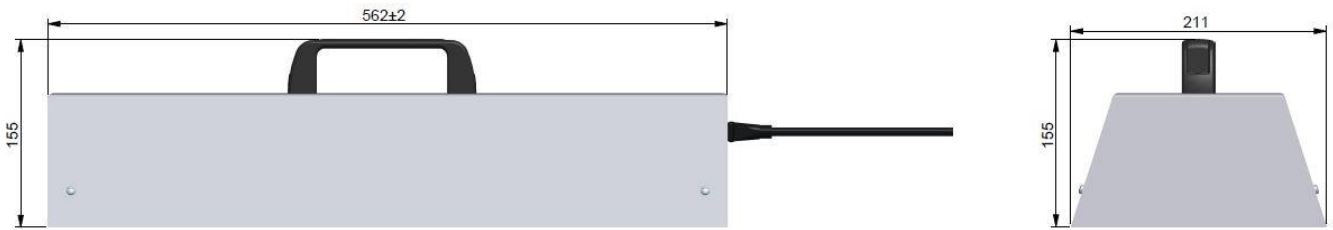


UV-Cleaner 95

Technical Datasheet



Technical Data	
Lamp Number	1
Lamp Reference	PLL 95W
Germicidal Power	27 W UVC
Lamp Lifetime	9 000 hours
Power Cable	5 meters Cable IEC
Power Supply	230V AC
Material	Aluminium
Total weight	2.6 Kg

This manual describes the precautions that must be taken to ensure the safe operation of the equipment UV Cleaner 95. Do not use the equipment until you have correctly understood these precautions, which must be applied for the operating methods and conditions of use.

During daily operation, the operator will therefore be required to pay particular attention to his own safety as well as to observe the precautions described below. Before operating the equipment, read the general instruction manual and the user manual completely.

Always use the device for the purpose for which it was intended for.

SECURITY

❖ **Never expose your eyes directly to UVc**

- ❖ This device is not intended to be used by people (including children) whose physical, sensory or mental capacities are reduced, or people deprived of experience or knowledge, unless they could benefit, for the intermediary of a person responsible for their safety, surveillance or prior instructions concerning the use of the device.
- ❖ This device has a UV-C emitter, it contains mercury. Handle with care even when not operating.
- ❖ Unintended use of the device or damage to its casing can lead to leakage of dangerous UV-C radiation. **UV-C radiation, even in small doses, can be harmful to the eyes and the skin.**
- ❖ Devices which are clearly damaged must not be put into operation

Only a professional can take care of the installation and maintenance of the device



The function of this device is to disinfect the surfaces located on the lower part of the housing.

When installing the box make sure that the UVc radiation is as close as possible to the surface to be disinfected.

During the operation of the box make sure that the lamp is clean and free of dust that can obstruct UVc radiation.

After an extended operating time the upper part of the case will be hot, a risk of burns must be taken into account, it is strongly advised to wear gloves when handling the case..

When replacing the lamp annually, it is imperative to install the same type of lamp.

Operating safety instructions

Make sure the lamp is inside the cabinet before turning on the equipment.
Never paint, modify, remove or damage the safety markings, subject the equipment, or the electrical cabinet to strong shocks.

Before handling your new equipment, locate the location of all controls and buttons

Safety instructions for operators

Do not use the equipment after taking drugs, alcohol or illegal substances which may cause drowsiness. The use of the machine is strongly discouraged from people prone to dizziness or fainting.

Remain vigilant about possible emissions of gases, dust and various radiations.

When changing operators, remember to indicate the current work situation to avoid any danger.

Lamp replacement

Important note : Be sure to allow the lamp to cool before replacing it.

The bactericidal effect of the 95W lamps decreases from 9,000 hours of operation, it is therefore imperative to replace the lamps, if you exceed this, you would expose yourself to a bacterial risk, the germicidal dose no longer being reached.

- 1) Turn off the device
- 2) Wait for the lamp to cool down
- 3) Press the red button on the socket to unlock the lamp
- 4) Extract the lamp
- 5) Install the new lamp (same reference: 95W PLL), ensuring that it is in abutment on the socket
- 6) Switch the device back on
- 7) Reset to 0 day counter pushing the button on top of device

